

Learning Journey for the Year

Dear teachers, the table below summarises the learning journey you will cover with your students this year.

BOY

Beginning of Year assessment to help you identify learning gaps.

Bridge Course

Supports you in reteaching and recapping critical pre-requisite skills.

Term 1

Chapter 1

Chapter 2

Chapter 3

Chapter 4

UASM 1

SE 1

4 chapters of Geography are to be covered in 21 days.

Interior of the Earth (4 days)

Our Changing Earth (6 days)

Hydrosphere (4 days)

Atmosphere (7 days)

This unit assessment will assess concepts learned in Chapters 1, 2, 3, and 4.

SE 1 will be based on the concepts of Chapters 1, 2, 3, and 4.

Term 1

Chapter 1

Chapter 2

Chapter 3

UASM 2

SE 2

3 chapters of History are to be covered in 17 days.

Understanding Medieval History (5 days)

New Kingdoms in Medieval India (5 days)

The Delhi Sultanate (7 days)

This unit assessment will assess concepts learned in Chapters 1, 2, and 3.

SE 2 will be based on the concepts of Chapters 1, 2, and 3.

Learning Journey for the Year

Term 1

Chapter 1

Chapter 2

Chapter 3

Chapter 4

UASM 3

SE 3

SPL

4 chapters of SPL are to be covered in 20 days.

The Story of Democracy (3 days)

How Does Democracy Work? (6 days)

Equality (6 days)

Understanding Gender (5 days)

This unit assessment will assess concepts learned in Chapters 1, 2, 3, and 4.

SE 3 will be based on the concepts of Chapters 1, 2, 3, and 4.

Term 1

Chapter 4

Chapter 5

Chapter 6

UASM 4

SE 4

History

3 chapters of History are to be covered in 16 days.

The Arrival of Europeans (5 days)

The Vijayanagar and Bahmani Kingdoms (5 days)

Mughal Empire (6 days)

This unit assessment will assess concepts learned in Chapters 4, 5, and 6.

SE 4 will be based on the concepts of Chapters 4, 5, and 6.

MOY

5 days of Term 1 Revision plan, followed by Middle of Year Assessment

Learning Journey for the Year

Term 2

Chapter 5

Chapter 6

UASM 5

SE 5

Geography

2 chapters of Geography are to be covered in 15 days.

Biosphere: Natural Vegetation and Wildlife (7 days)

Life in Different Regions (8 days)

This unit assessment will assess concepts learned in Chapters 5 and 6.

SE 5 will be based on the concepts of Chapters 5 and 6.

Term 2

Chapter 7

Chapter 8

Chapter 9

Chapter 10

UASM 6

SE 6

History

4 chapters of History are to be covered in 25 days.

Tribes in Medieval India (5 days)

Religious Movements in Medieval India (7 days)

Art, Culture, and Architecture in Medieval India (7 days)

Developments in the 18th Century (6 days)

This unit assessment will assess concepts learned in Chapters 7, 8, 9, and 10.

SE 6 will be based on the concepts of Chapters 7, 8, 9, and 10.

Learning Journey for the Year

Term 2

Chapter 5

Chapter 6

Chapter 7

UASM 7

SE 7

SPL

3 chapters of SPL are to be covered in 17 days.

The State Government (6 days)

Media and Democracy (6 days)

Markets Around Us (5 days)

This unit assessment will assess concepts learned in Chapters 5, 6, and 7.

SE 7 will be based on the concepts of Chapters 5, 6, and 7.

EOY

5 days of Term 2 revision plan followed by End of Year Assessment

Note: Note: All subject enrichment (SE) activities are optional. However, It is recommended that students perform them in class in order to strengthen their conceptual understanding.

Life Skills - The important skills that students will develop this year are:

⚡ THINKING SKILLS

1. Solving real-world problems
2. Creating new ideas
3. Being curious
4. Reflecting on your learning
5. Learning from mistakes

🗣️ COMMUNICATION SKILLS

1. Communicating effectively
2. Presenting ideas
3. Using information
4. Using different media

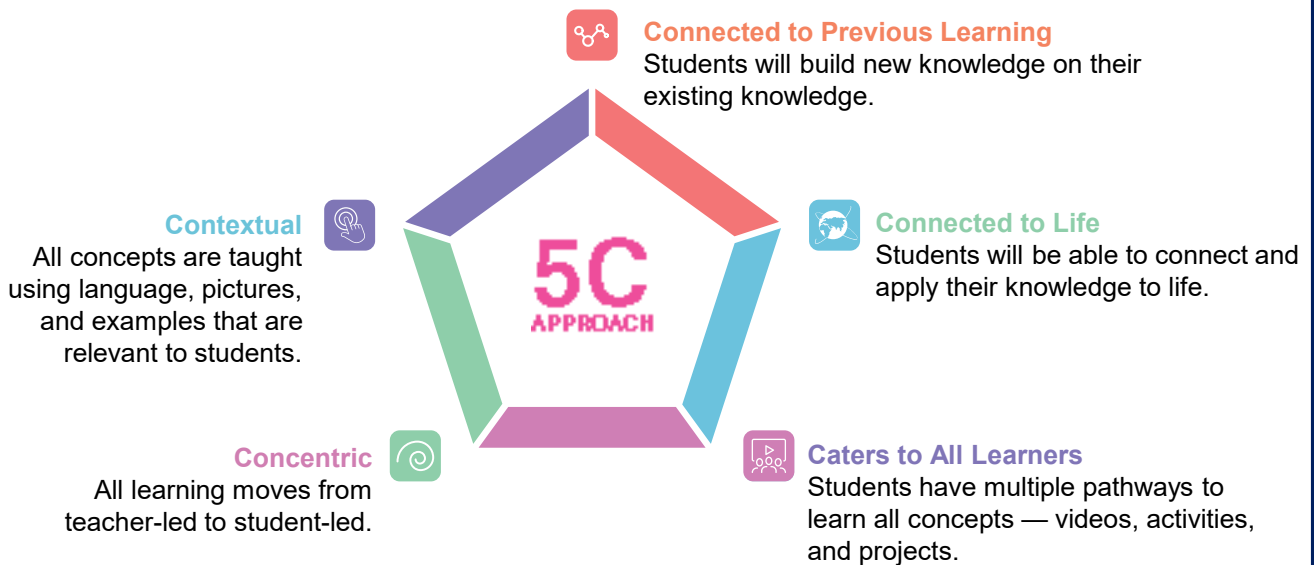
🤝 COLLABORATION SKILLS

1. Working with others
2. Appreciating others' ideas
3. Resolving conflicts
4. Connecting yourself to your community
5. Connecting yourself to the nation

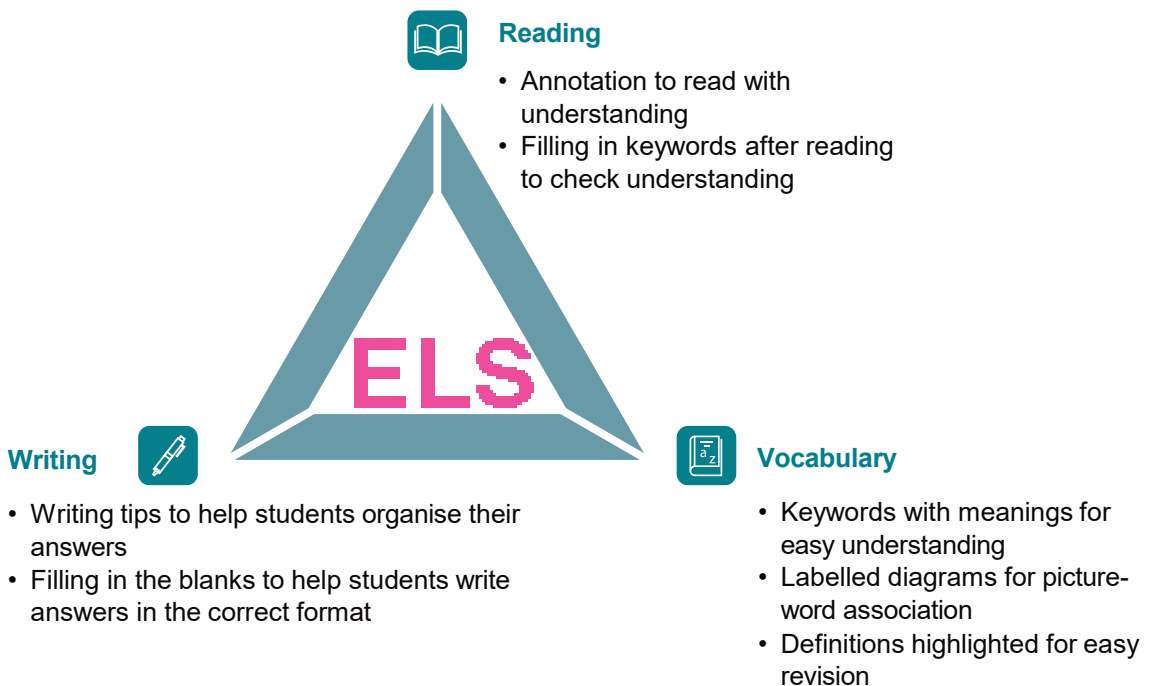
The LEAD Method

The LEAD Method includes unique pedagogical approaches you will use to help your students develop a deep understanding of concepts. These are integrated into the lesson plans.

1. 5Cs Approach: Every concept is taught through the 5Cs approach



2. ELS: English Language Strategies



The LEAD Method

3. VLC: Visualise-Locate-Connect



Visualise

See to understand better

Videos



Illustrations



A group of 500 men selected from the tribes that lived in Athens formed a council. This

The Assembly voted on whether these laws should be passed.

Graphic Organisers

Parts of a Map

Directions

The four cardinal directions or points are north, east, south, and west, and the four intermediate directions or points are north-west, south-west, south-east, and north-east.

Symbols and Colours

Symbols are used to show human-made and natural features. They include pictures, letters, and shading. Colours are used to show features such as plains (in green) and mountains (in brown).

Scale

Scale is the ratio of the distance between two places on a map and the exact distance between them on the ground.

Timelines



Connect

See connections between different things

The past with the present



Around 4,000 years ago, maps were made on clay tablets.



Today, maps are made digitally and can be used on our smartphones.

India with the world

First Neolithic settlements in the Fertile Crescent

First Neolithic Settlements in India

The government, society, and individuals

5.6 WAYS TO STRENGTHEN DEMOCRACY

1

Participating in Elections



All citizens must use their right to vote to hold the government responsible.

2

Choosing the Representative



Citizens must know the candidates and choose the right ones thoughtfully.

3

Standing against Corruption



Citizens must not give bribes to officials. This will reduce corruption.

4

Using Media



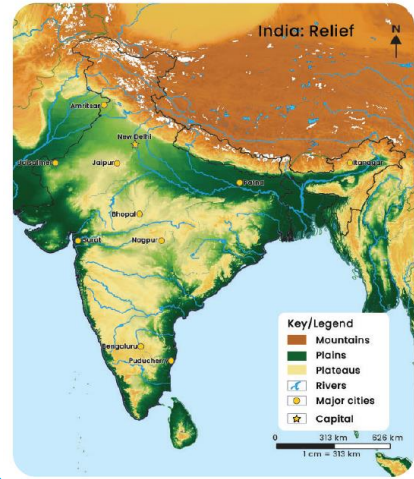
Media must be used effectively to voice opinions and point out any wrongdoing of the ruling government.



Locate

Find out where things happen

Maps



Field Visits



Project



Important Icons

Icons and Features of the Books

CONNECT TO LIFE

Provide activities and questions that help students apply new concepts to their life.

ACTIVITY

Help students understand concepts and apply their learnings.

KEYWORDS

Provide meanings of difficult words as they read.

THINK

Provide opportunities for building thinking skills.

COLLABORATE

Provide opportunities for building collaboration skills.

COMMUNICATE

Provide opportunities for building communication skills.



Students can access important resources at home by scanning these codes using the LEAD Student App.

Icons and Features in the Lesson Plans



Read

Ensure that you use the routines and structures as mentioned in the plans to achieve excellence in each chapter.



**Turn and Talk/
Think-Pair-Share**



**Think-Write-Pair-Share/
Work in Groups**

Resources called LCRs will help you understand these in detail. The LCR for each routine or structure will be mentioned under 'Preparation Needed' the first few times that routine is used.



**Stop and Jot/ Work in
Pairs/ Think and Answer**



Let's check the answer

Assessment Structure for the Year

The objective of assessments is to check if all students have understood the concept and can apply their learning. Based on assessment data, it is very important to do strong remedials using LEAD remedial recommendation before progressing forward. LEAD prescribes the following assessments:

BOY

1 written assessment

Max marks – 30

Duration – 60 minutes

Bridge Course

1 written assessment

Max marks – 20

Duration – 20 minutes

Term 1

UASM 1
(Geography Chapters 1, 2, 3, and 4)

Subject Enrichment 1

UASM 2
(History Chapters 1, 2, and 3)

Subject Enrichment 2

UASM 3
(SPL Chapters 1, 2, 3, and 4)

Subject Enrichment 3

UASM 4
(History Chapters 4, 5, and 6)

Subject Enrichment 4

Four unit assessments will be conducted in Term 1 for Geography, History, and SPL with the following structure.

1 written assessment

Max marks – 20

Duration – 40 minutes

1 subject enrichment

Max marks – 10

Graded as per Rubric

Note: While we have provided assessments for all subject enrichment (SE) activities, we recommend that you do at least one assessment in a term.

MOY

1 written assessment

Max marks – 80

Duration – 150 minutes

Assessment Structure for the Year

Term 2

UASM 5
(Geography Chapters
5 and 6)

Subject Enrichment 5

UASM 6
(History Chapters 7, 8,
9, and 10)

Subject Enrichment 6

UASM 7
(SPL Chapters 5, 6,
and 7)

Subject Enrichment 7



EOY

Three unit assessments will be conducted in Term 2 for Geography, History, and SPL with the following structure.

1 written assessment

Max marks – 20 Duration – 40 minutes

1 subject enrichment

Max marks – 10 Graded as per Rubric

Note: While we have provided assessments for all subject enrichment (SE) activities, we recommend that you do at least one assessment in a term.

1 written assessment

Max marks – 80 Duration – 150 minutes

Assessment Framework

Unit Assessments

The written unit assessments of Geography have the following structure:

Types of Question	Marks	Questions	Total Marks
Multiple Choice Questions	1	4	4
Fill in the blanks	3	1	3
Short Answer Questions	2	3	6
Long Answer Questions	4	1	4
Map Work	3	1	3
		10 questions	20 marks

The written unit assessments of History have the following structure:

Types of Question	Marks	Questions	Total Marks
Multiple Choice Questions	1	4	4
Very Short Answer - Fill GO/Match the following	3	1	3
Short Answer Questions	2	3	6
Long Answer Questions	4	1	4
Map Work	3	1	3
		10 questions	20 marks

The written unit assessments of SPL have the following structure:

Types of Question	Marks	Questions	Total Marks
Multiple Choice Questions	1	5	5
Fill in the blanks	5	1	5
Short Answer Questions	2	3	6
Long Answer Questions	4	1	4
		10 questions	20 marks

Assessment Framework

MOY & EOY Assessments

MOY and EOY assessments will have the following structure:

Types of Question	Marks	Questions	Total Marks
Multiple Choice Questions	1	15	15
Match the following	4	1	4
Fill in the Blanks	1	3	3
Very Short Answer - Fill GO	5	1	5
Short Answer Questions	2	12	24
Long Answer Questions	4	6	24
Map Work	5	1	5
		37 questions	80 marks

Spiraling in Assessments

- In MOY – 100% questions will be from Term 1 Chapters.
- In EOY – 75% questions will be from Term 2 Chapters, and 25% will be from Term 1 Chapters.
- In Unit Assessments – 85%-90% of the questions will be from the chapters being assessed and 10%-15% questions from previous chapters covered in the previous unit assessment of that subject. This is to help students practise concepts and be better prepared for the MOY and EOY.
- The exact syllabus is provided in the Important Notes of the respective assessment day.

Assessment Framework

Difficulty level of Questions

Difficulty level of questions in the assessments are based on Board guidelines. All questions are categorised as per the table below:

	LOTS (Lower Order Thinking Skills)	MOTS (Middle Order Thinking Skills)	HOTS (Higher Order Thinking Skills)
Definition	Questions based on recalling knowledge	Questions based on applying skills in familiar scenarios	Questions based on applying skills in unfamiliar scenarios, analysing situations and building on top of what was taught in class.
Bloom's Level	Remember	Understand Application (simple)	Application (complex) Evaluate Analyse Create

In line with Board guidelines, LEAD assessments follow the structure explained below

Unit ASM 1 – 50% LOTS : 40% MOTS : 10% HOTS

Unit ASM 2 – 50% LOTS : 40% MOTS : 10% HOTS

Unit ASM 3 – 40% LOTS : 50% MOTS : 10% HOTS

Unit ASM 4 – 30% LOTS : 50% MOTS : 20% HOTS

MOY – 30% LOTS : 50% MOTS : 20% HOTS

Unit ASM 5, 6, 7 – 30% LOTS : 50% MOTS : 20% HOTS

EOY – 30% LOTS : 50% MOTS : 20% HOTS

We slowly increase the level of difficulty for students in Term 1.

Materials Required

You will need the following materials for the various activities and experiments that will be conducted in Term 1.

Term 1 – List of Materials

Geography

Chapter 1: Interior of the Earth

- Chart paper — 1
- Sellotape — 1
- Board pins — 6

Chapter 2: Our Changing Earth

- Packet of sketch pens — 3
- Chart paper — 6
- A transparent box or deep tray (at least 12 in. x 7 in. x 5 in.)
- A small plastic plate/lid
- A glass of water

Chapter 3: Hydrosphere

- Empty bottles of the same size — 10
- Small paper cups — 10
- Big paper cups — 10
- Marker — 5
- Clear flat dish — 1
- A glass of ice cold water mixed with the colour blue
- A glass of piping hot water mixed with the colour red

Chapter 4: Atmosphere

- Packet of sketch pens — 3
- A4 sheets — 10

History

Chapter 1: Understanding Medieval History

- Chart paper — 1
- Sellotape — 1
- Board pins — 6
- Outline map of India
- Book — 10

Chapter 2: New Kingdoms in Medieval India

- A timer or stopwatch or a mobile phone for the team quiz.

Materials Required

You will need the following materials for the various activities and experiments that will be conducted in Term 1.

Term 1 – List of Materials

History	Chapter 3: Delhi Sultanate <ul style="list-style-type: none">• Outline map of India — 10• Packet of sketch pens — 3• A4 sheets — 10
	Chapter 4: Arrival of the Europeans <ul style="list-style-type: none">• Chart paper — 1• Sellotape — 1• Board pins — 6
	Chapter 6: Mughal Empire <ul style="list-style-type: none">• Outline map of India — 10• Packet of sketch pens — 3
SPL	Chapter 1: The Story of Democracy <ul style="list-style-type: none">• Chart paper — 1• Sellotape — 1• Board pins — 6
	Chapter 2: How Does Democracy Work? <ul style="list-style-type: none">• A4 sheets — 10
	Chapter 4: Understanding Gender <ul style="list-style-type: none">• CRP 1 — 2 per table group

Materials Required

You will need the following materials for the various activities and experiments that will be conducted in Term 2.

Term 2 – List of Materials

Geography	Chapter 5: Biosphere: Natural Vegetation and Wildlife <ul style="list-style-type: none">• Chart paper — 1• Sellotape — 1• Board pins — 4
	Chapter 6: Life in Different Regions <ul style="list-style-type: none">• Outline map of the world — 10• Packet of sketch pens — 1• A4 sheets — 10
History	Chapter 7: Tribes in Medieval India <ul style="list-style-type: none">• Chart paper — 1• Sellotape — 1• Board pins — 4• Outline map of India — 10• A4 Sheet — 10
	Chapter 8: Religious Movements in Medieval India <ul style="list-style-type: none">• Political map of India — 10
	Chapter 9: Art, Culture, and Architecture in Medieval India <ul style="list-style-type: none">• No materials required
	Chapter 10: Developments in the 18th Century <ul style="list-style-type: none">• No materials required
SPL	Chapter 5: State Government <ul style="list-style-type: none">• Chart paper — 1• Sellotape — 1• Board pins — 6
	Chapter 6: Media and Democracy <ul style="list-style-type: none">• No materials required
	Chapter 7: Markets around Us <ul style="list-style-type: none">• No materials required